



# FLG-X7C-465

Flagpole-- 65° Azimuth Beam, 50.6 inches

Directing our energies for you.

698-896MHz Xpol

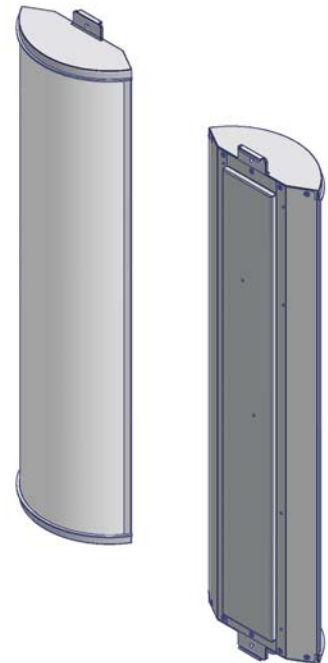
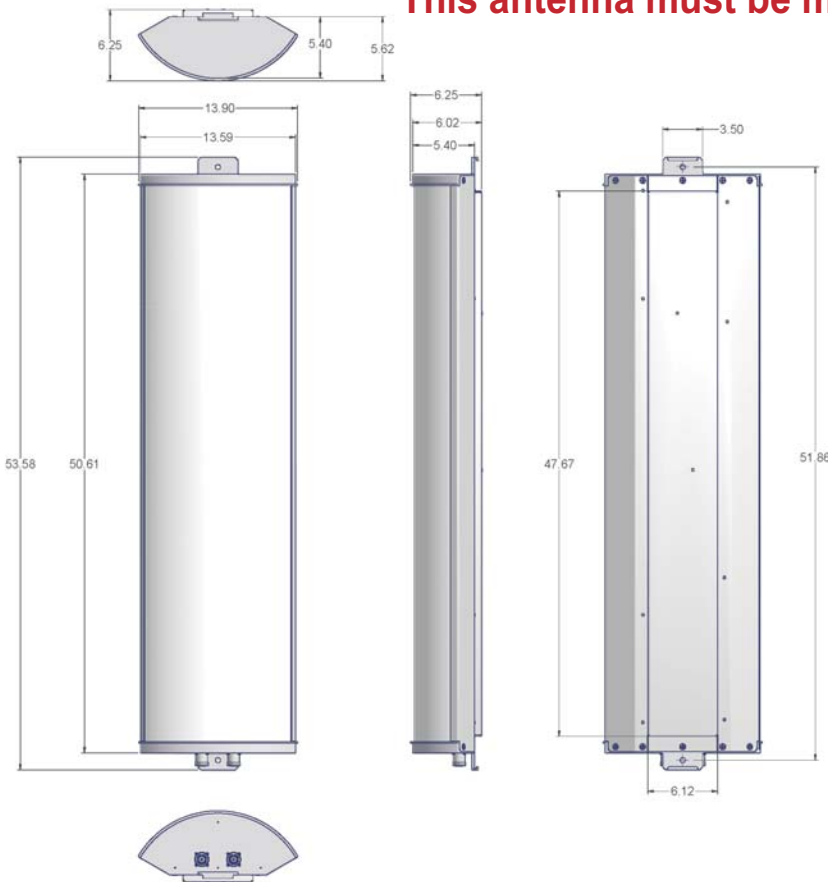
## Electrical Specifications

Frequency	698-896 MHz
Polarization	Slant +/- 45°
Gain @ 896 MHz	12.8 dBd
Horizontal Beam Low / High Band	65°
Vertical Beam Low / High Band	14.5°
Elect. Downtilt Range, 2° Increments	0-10°
VSWR / Return Loss	<1.45:1 / 14.7 dB
Front-to-Back at Horizon Low Band	>26 dB
Front-to-Back at Horizon High Band	>30 dB
Upper Side Lobe Suppression	<-17 dB
Impedance	50 Ohms
Power Input Per Port	500 Watts CW
Intermodulation (2x20W)	<-150 dBc

## Mechanical Specifications

Input Connector (female)	2 Bottom Mounted 7/16 DIN (silver finish)
Antenna Dimensions (LxWxD)	50.6 x 13.9 x 6.2 in. (1285 x 353 x 157mm)
Antenna Weight	approx. 20 lbs
Lightning Protection	Direct Ground
RF Distribution	Printed Microstrip Substrate
Radome	Ultra High-Strength Luran
Weatherability	UV Stabilized, ASTM D1925
Radome Water Absorption	ASTM D570, 0.45%
Environmental	MIL-STD-810E
Wind Survival	Must be mounted in an enclosed structure
Front Wind Load @ 100MPH	Not specified
Equivalent Flat Plate @ 100MPH	Not specified
Mounting	Stainless Steel Band Straps

**This antenna must be mounted in an enclosed structure**



**5 Year Warranty**

## Ordering Information & Options

FLG-X7C-465-x

"x" is a placeholder for the built-in fixed electrical downtilt in degrees set "x" to 0, 2, 4, 6, 8 or 10 for electrical tilt.