



FLG-X7CAP-465

Flagpole-- 65° Azimuth Beam, 50.6 inches

Directing our energies for you.

Dual Band and Xpol

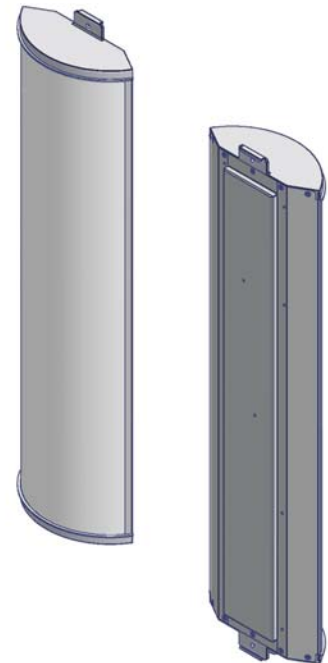
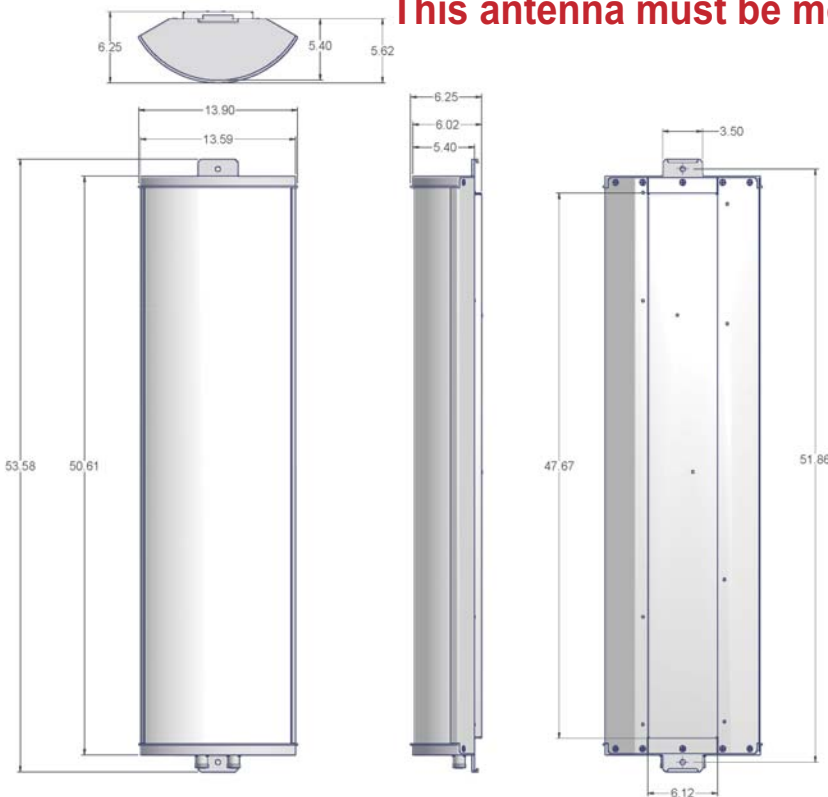
Electrical Specifications

| | |
|--------------------------------------|---------------------------|
| Frequency | 698-896 & 1710-2170 MHz |
| Polarization | Slant +/- 45° |
| Gain @ 896 MHz | 12.3 dBd |
| Gain @ 2155 MHz | 15.8 dBd |
| Horizontal Beam Low / High Band | 65° / 65° |
| Vertical Beam Low / High Band | 14.5° / 7° |
| Elect. Downtilt Range, 2° Increments | 0-10° low, 0-6° high band |
| VSWR / Return Loss | <1.50:1 / 14.0 dB |
| Front-to-Back at Horizon Low Band | >27 dB |
| Front-to-Back at Horizon High Band | >27 dB |
| Upper Side Lobe Suppression | <-18 dB |
| Impedance | 50 Ohms |
| Power Input Per Port | 500 Watts CW |
| Intermodulation (2x20W) | <-150 dBc |

Mechanical Specifications

| | |
|--------------------------------|--|
| Input Connector (female) | 2 Bottom Mounted 7/16 DIN (silver finish) |
| Antenna Dimensions (LxWxD) | 50.6 x 13.9 x 6.2 in. (1285 x 353 x 157mm) |
| Antenna Weight | 22.0 lbs |
| Lightning Protection | Direct Ground |
| RF Distribution | Printed Microstrip Substrate |
| Radome | Ultra High-Strength Luran |
| Weatherability | UV Stabilized, ASTM D1925 |
| Radome Water Absorption | ASTM D570, 0.45% |
| Environmental | MIL-STD-810E |
| Wind Survival | Must be mounted in an enclosed structure |
| Front Wind Load @ 100MPH | Not specified |
| Equivalent Flat Plate @ 100MPH | Not specified |
| Mounting | Stainless Steel Band Straps |

This antenna must be mounted in an enclosed structure



5 Year Warranty

This antenna contains two integrated diplexers. Each connector port supports both 698-896 and 1710-2170MHz

Ordering Information & Options

FLG-X7CAP-465-xy-i

"xy" is a placeholder for the built-in fixed electrical downtilt in degrees
 set "x" to 2, 4, 6, 8 or 10 for low frequency band-side of antenna
 set "y" to 0, 2 or 4 or 6 for high frequency band-side of antennas

This model includes two built-in diplexers to reduce input connector ports from 4 to 2