



X7CAP-165

65° Azimuth Beam, 12.6 inches

Directing our energies for you.

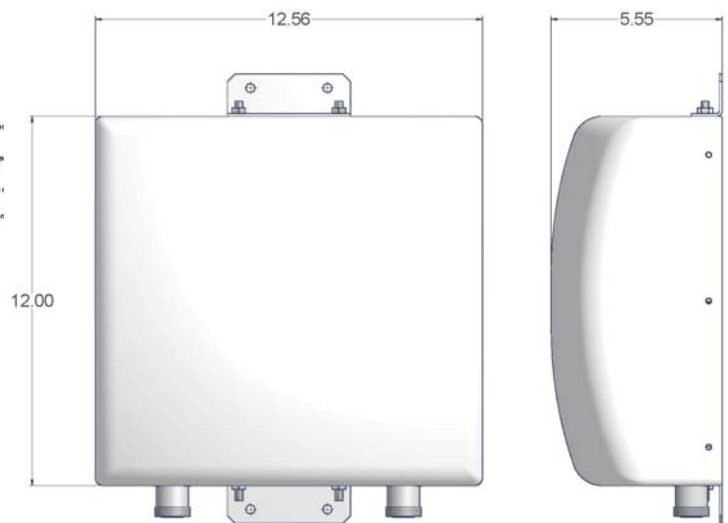
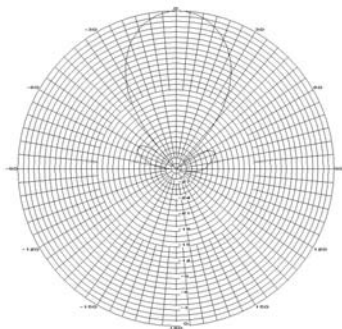
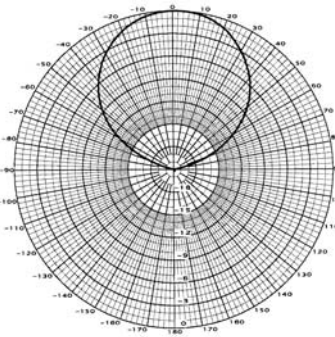
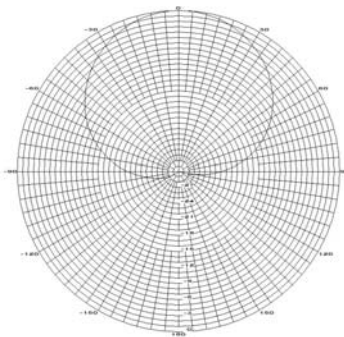
698-896 & 1710-2170 MHz Band

Electrical Specifications

Frequency	698-896 & 1710-2170 MHz
Polarization	Slant +/- 45
Gain Low Band	7.2 dBd
Gain High Band	9.8 dBd
Horizontal Beam (3dB Points)	63° & 65°
Vertical Beam (3dB Points)	63° & 33°
Electrical Downtilt Options	0°
VSWR / Return Loss	<1.50:1 / 14.0 dB
Front-to-Back at Horizon	>25 dB
Impedance	50 Ohms
Power Input Per Connector	250 Watts CW
Isolation	<-25 dB
Intermodulation (2x20W)	<-150 dBc

Mechanical Specifications

Input Connector (female)	Bottom Mount Only 7/16 DIN (silver finish)
Antenna Dimensions (LxWxD)	12.6 x 12.0 x 5.6 in. (320 x 305 x 142mm)
*Antenna Weight	6.0 lbs
Lightning Protection	Direct Ground
RF Distribution	Printed Microstrip Substrate
Radome	Ultra High-Strength Luran
Weatherability	UV Stabilized, ASTM D1925
Radome Water Absorption	ASTM D570, 0.45%
Environmental	MIL-STD-810E
Wind Survival	150 mph
Front Wind Load @ 100MPH	28 lbs
Equivalent Flat Plate @ 100MPH	.56 sq-ft. (c=2)
Mounting Brackets	Standard Wall Mount or 2.5" OD Pipe Mount
Clamps/Bolts	Hot Dip Galvanized Steel/Stainless Steel



5 Year Warranty

Ordering Information & Options

X7CAP-165-00i-bot Panel antenna, 65 deg H, bottom mounted conn., 0 deg e-tilt on both bands, w/integrated diplexers & mounting bracket.
 X7CAP-165-00i-bot-j# add a "-j#" to add a 1/2" RF cable, where "#" is the cable length, "j2" is 2 meters, "j4" is 4 meters, "j6" is 6 meters...

*Antenna Weight may vary slightly with options such as back or bottom connectors.

