



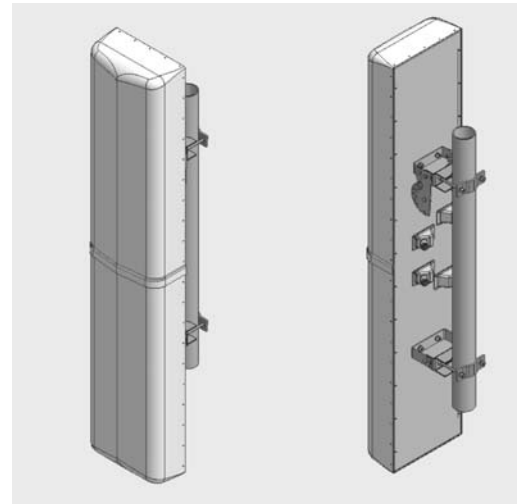
# XDU06-80

Directing our energies for you.

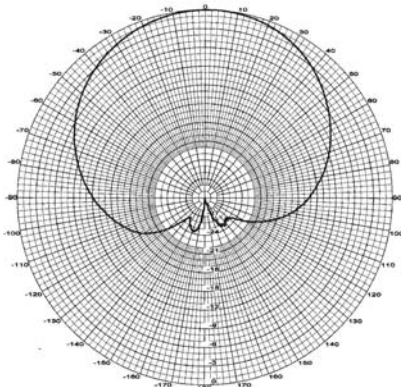
## 4 in 1 Design Dual Band and Dual Polarized

### Electrical Specifications

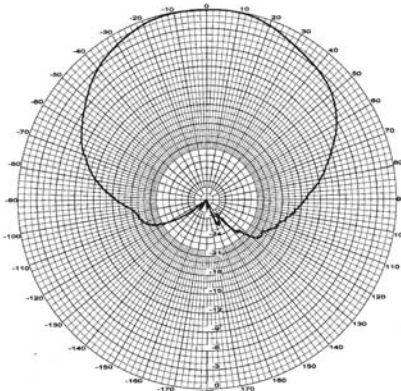
	<u>824-896 MHz</u>	<u>1850-1990 MHz</u>
Gain	15.0 dBi	17.7 dBi
Horizontal Beam (1/2 power)	80°	80°
Vertical Beam (1/2 power)	11°	5°
Electrical Downtilt Options	0, 2, 4 & 6 deg	0, 2, 4 or 6 deg
VSWR	≤1.40:1	≤1.40:1
VSWR (with -i option)	≤1.50:1	≤1.50:1
Front-to-Back Ratio	>24 dB	>27 dB
Upper Side Lobe Supp.	<-18 dB	<-20 dB
Polarization	±45°	±45°
Impedance	50 ohms	50 ohms
Power Input Rating (per port)	500 CW	250 CW
Intermodulation (2x20w)	typ. -150 dBc	typ. -150 dBc
Port to Port Isolation	>27 dB	>27 dB
Cross Polar Discrimination	>16 dB	>18 dB



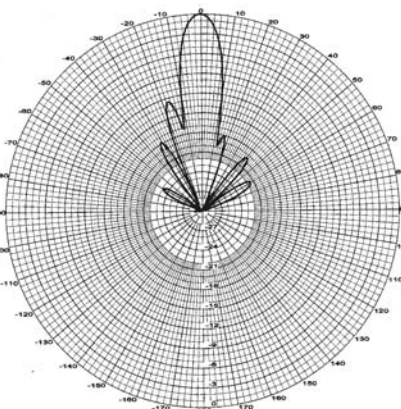
824-896 MHz  
Horizontal pattern



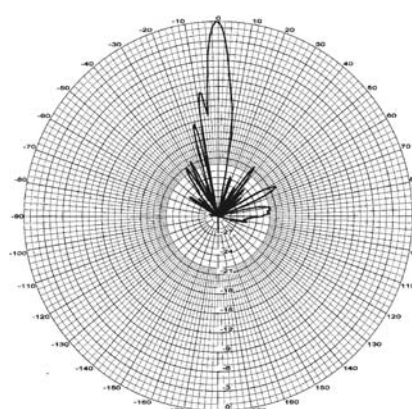
1850-1990 MHz  
Horizontal pattern



Vertical pattern



Vertical pattern



**80° Horizontal Beams  
11° & 5° Vertical Beams  
15.0 & 17.7 dBi Gain**

